



GMT MONTHLY MEMBERSHIP PROGRESS REPORT

Results as of: 5/31/2017

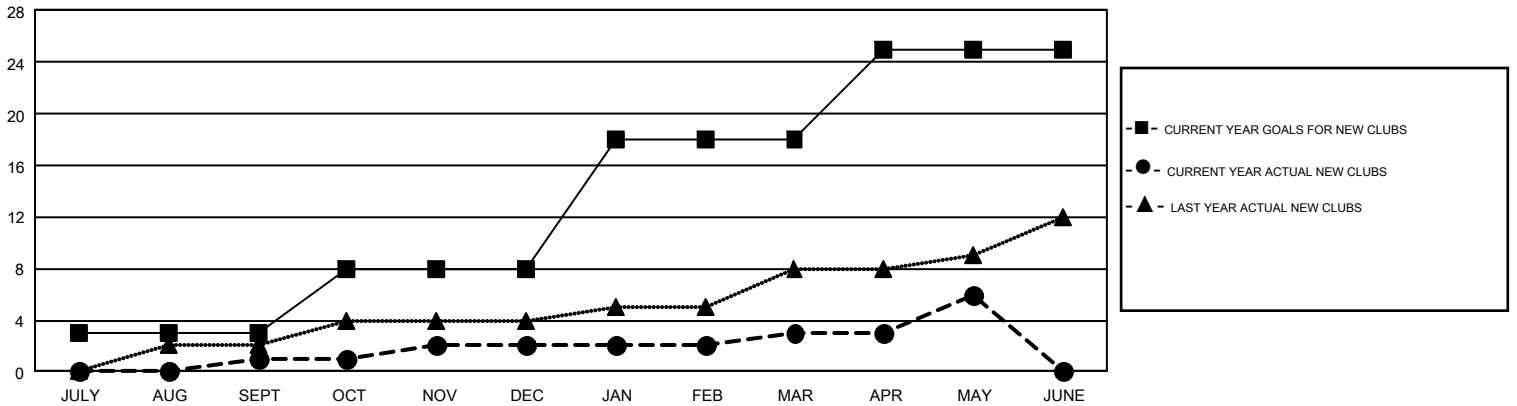
GMT Constitutional Area 7, Group A

GMT: WAYNE OAKES

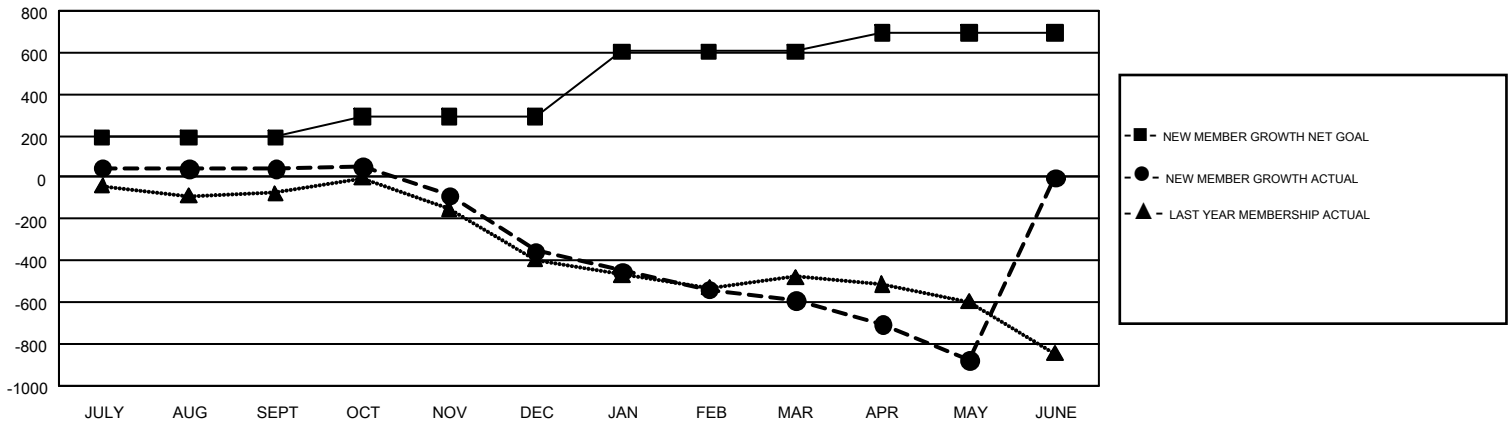
REPORT DOES NOT INCLUDE CLUBS IN UNDISTRICTED AREAS.

Clubs				Members			
RESULTS FOR 2016-2017				RESULTS FOR 2016-2017			
QUARTER	NEW CLUB GOAL	NEW CLUBS	DROPPED CLUBS	QUARTER	NEW MEMBER GROWTH NET GOAL (not reinstated or transfers)	NEW MEMBER GROWTH ACTUAL (not reinstated or transfers)	DROPPED MEMBERS ACTUAL (including transfers)
JULY/AUG/SEPT	3	1	1	JULY/AUG/SEPT	192	821	779
OCT/NOV/DEC	5	1	2	OCT/NOV/DEC	98	582	978
JAN/FEB/MAR	10	1	3	JAN/FEB/MAR	315	613	851
APR/MAY/JUNE	7	3	3	APR/MAY/JUNE	90	493	779

GOALS AND ACTUAL NEW CLUBS CUMULATIVE



GOALS AND ACTUAL MEMBERS CUMULATIVE



DROPPED CLUBS: 9	798 CLUBS OF 1,228 ADDED 1 OR MORE NEW MEMBERS	GENDER DISTRIBUTION
DROPPED MEMBERS		MALE 17,505 (67.22%)
DECEASED 317		FEMALE 8,535 (32.78%)
CLUB CANCELLED 12	CLICK HERE FOR CUMULATIVE MEMBERSHIP DATA	TOTAL FAMILY UNIT MEMBERS 4,397
OTHER 3,058		FAMILY MEMBERS PAYING HALF DUES 2,227
TOTAL 3,387		